

DRAG2ZERO

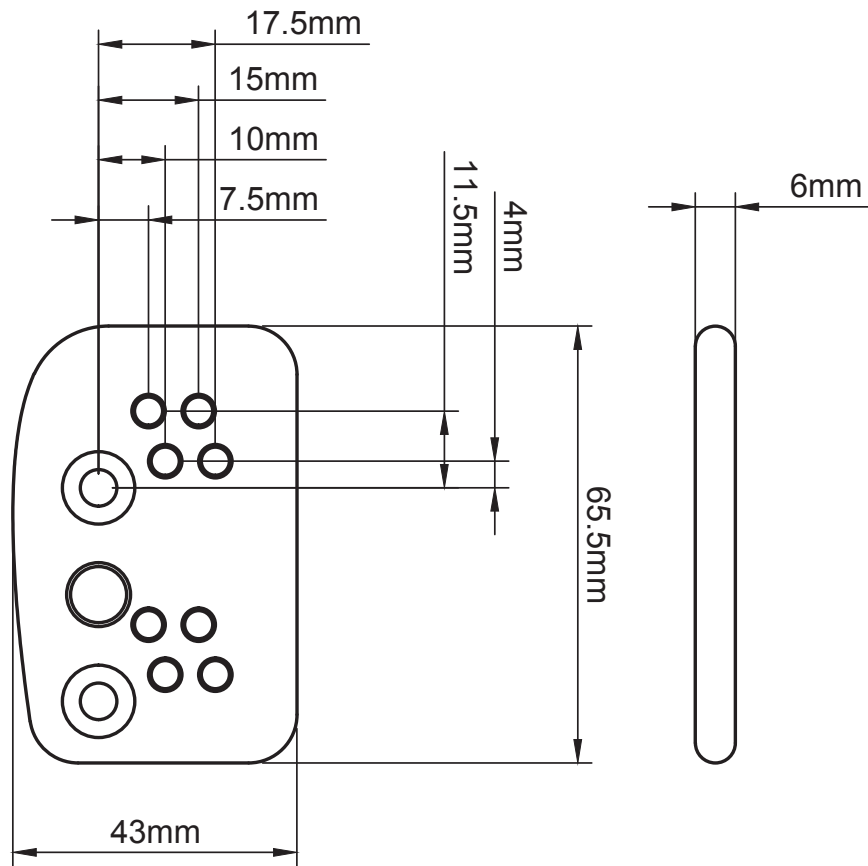


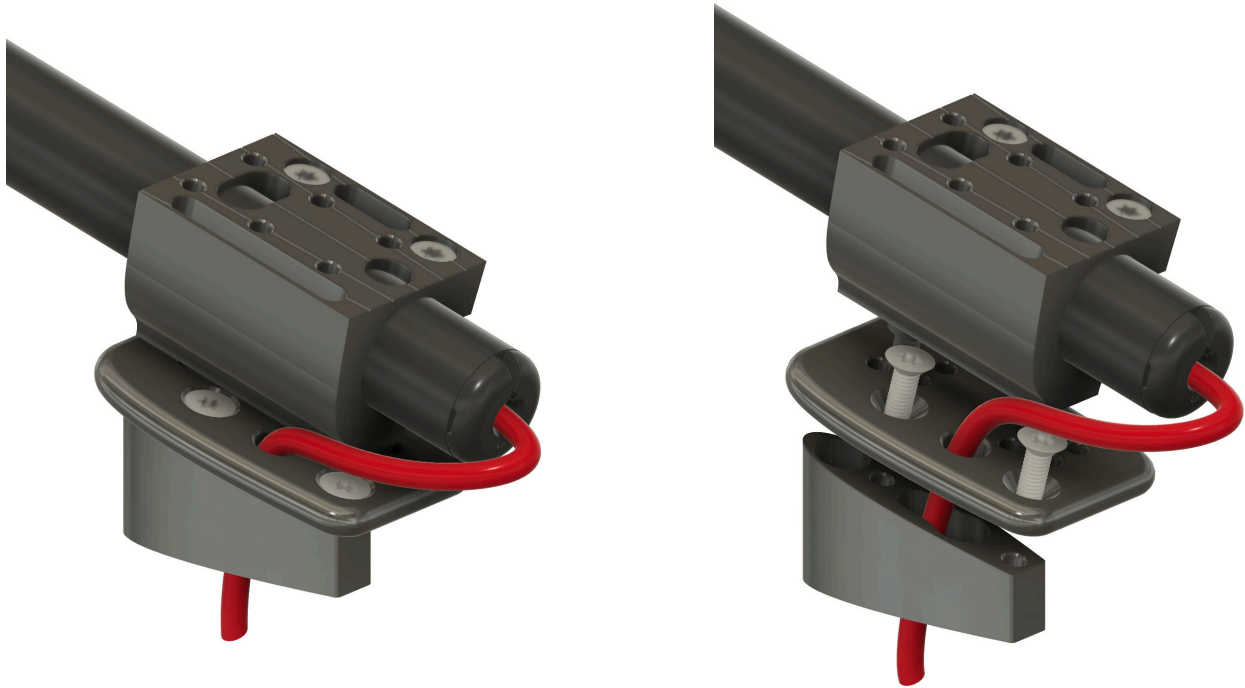
Gen2 Width adjustment plate



For use with Gen2 Drag2Zero angled shims

- Supplied with
 - 2 x Gen2 Width adjustment plates
 - 4 x M5 14mm Countersunk bolts
 - 4 x M5 10mm Cap head bolts
- Micro width adjustment of 7.5mm, 10mm, 15mm and 17.5mm each side.
- Can be used to narrow or widen pole clamp position in relation to podiums.





Shifter cable is not to be routed through pole clamp cable channel as previously done.

