



Reach / Width

Adjustment plates

Drag2Zero Reach and Width Adjustment plates

Can provide either 15mm or 30mm of width adjustment on each side

Can provide up to 35mm of additional reach for Gen1 angled shims and

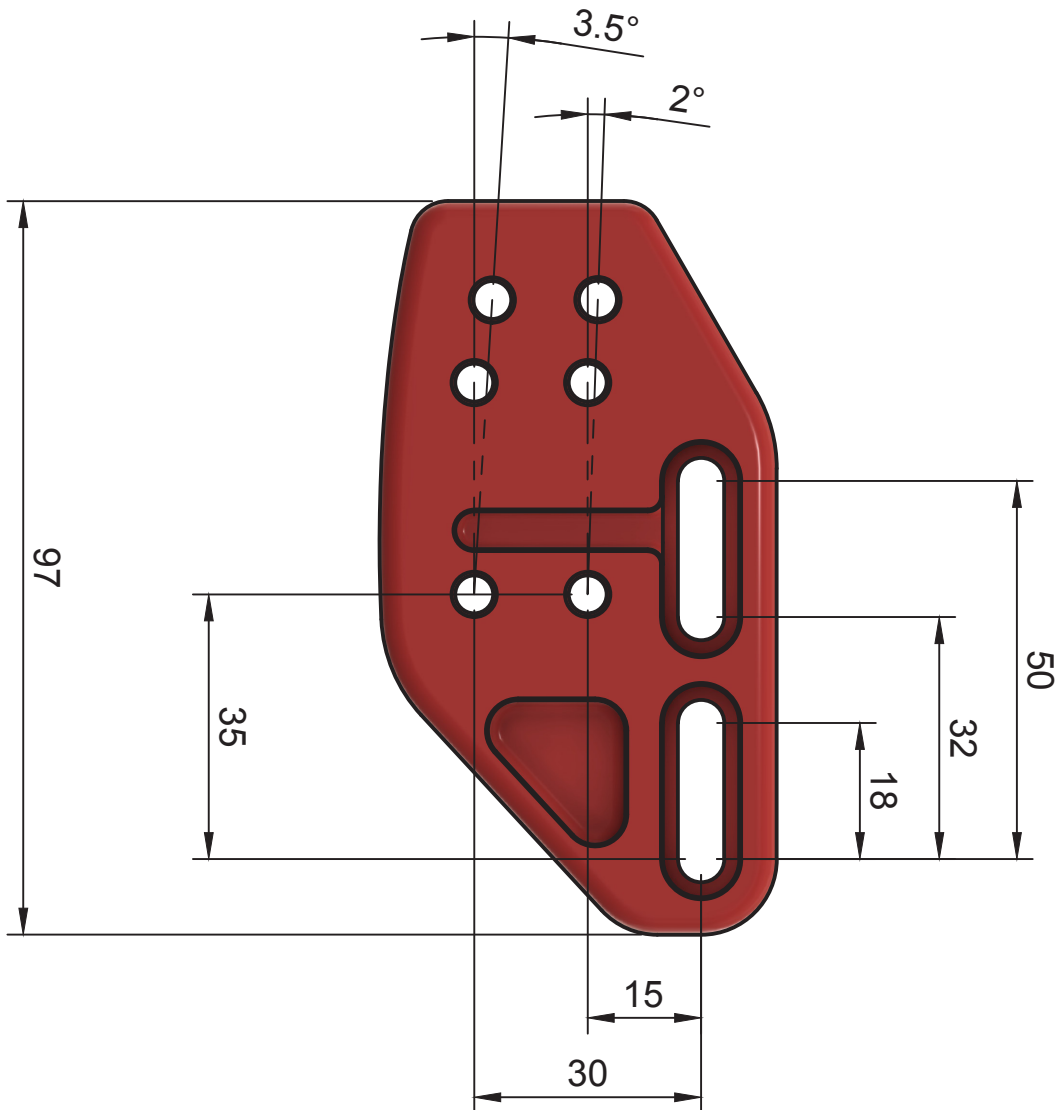
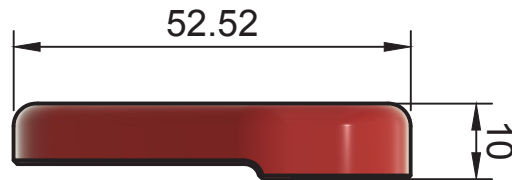
25mm of additional reach for Gen2 angled shims.

Kit List

2 x Reach/Width Adjustment plates

4 x M5 or M6 Nuts and Washers

4 x M6 Angled Shim Mounting Bolts



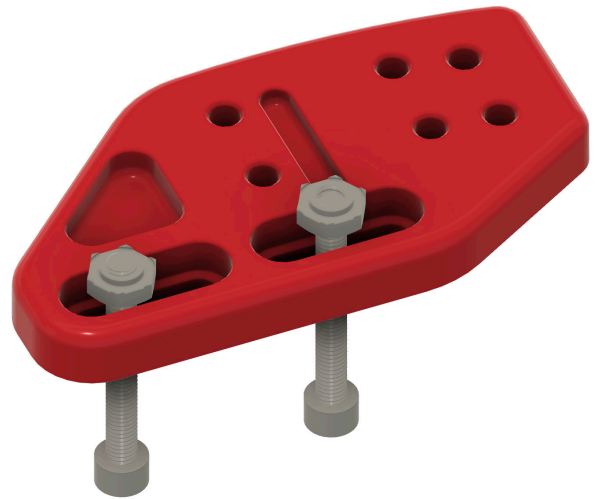
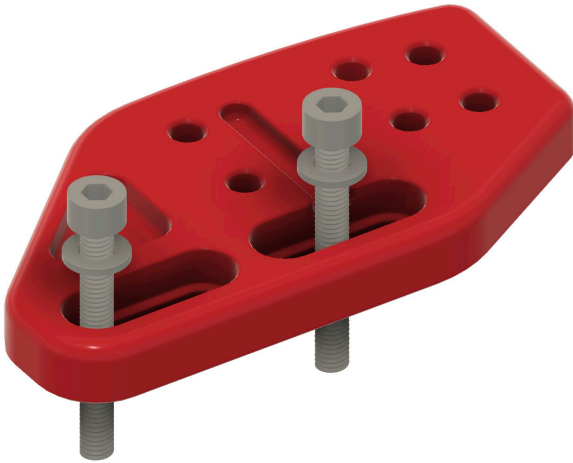


Assembly

Mounting for bikes with M5 bolts

Torque to your basebars specific torque.

If your system is a bolt down system. Use the provided M5 washers as shown below.



Mounting for bikes with M6 bolts

Torque to your basebars specific torque.





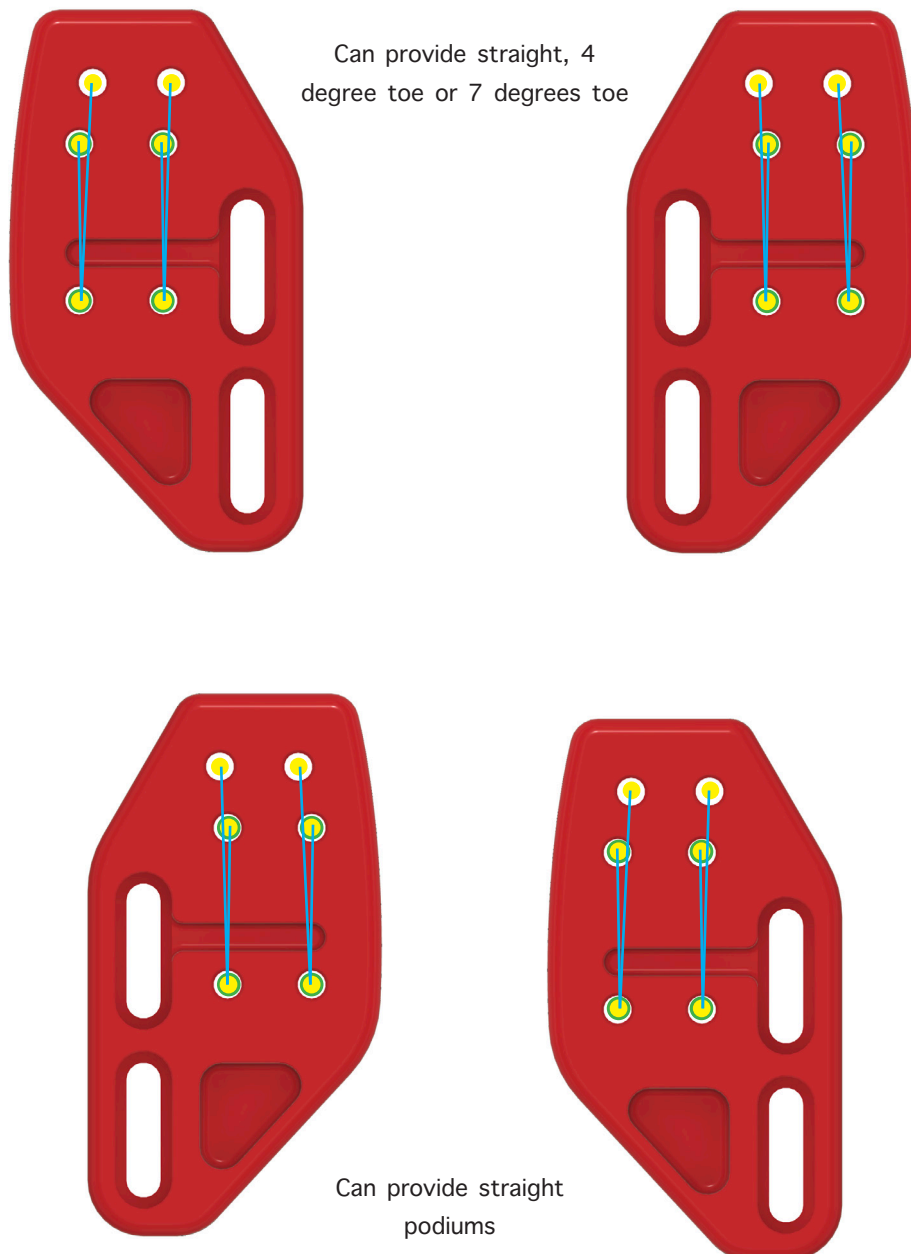
Adjustability

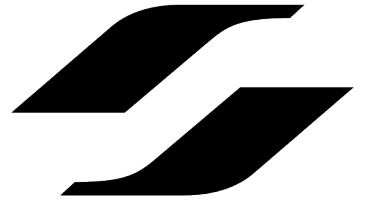
Gen1 components

Gen1 angled shims use fixing holes marked **yellow**. The plate can be used to gain a wider or a narrower setup. Note: When used to narrow the basebar podium width, you will only be able to use Gen1 angled shims straight.

Gen2 components

Gen2 angled shims are always run straight and use fixing holes marked **Green**. Toe is achieved through the Gen2 pole clamp.





Cable Routing

Cable routing for Gen1 components

Electronic cables are routed through the back slot in the angled shim and the back slot in the reach plate as seen below. Be careful when bolting angled shims down to ensure cables do not get trapped.

Torque angled shims to 5Nm



Cable routing for Gen2 components

Electronic cables are routed through the pole clamp side groove, the centre hole in the angled shim, and the front slot in the reach plate as seen below. Be careful when bolting angled shims down to ensure cables do not get trapped.

Torque angled shims to 5Nm

