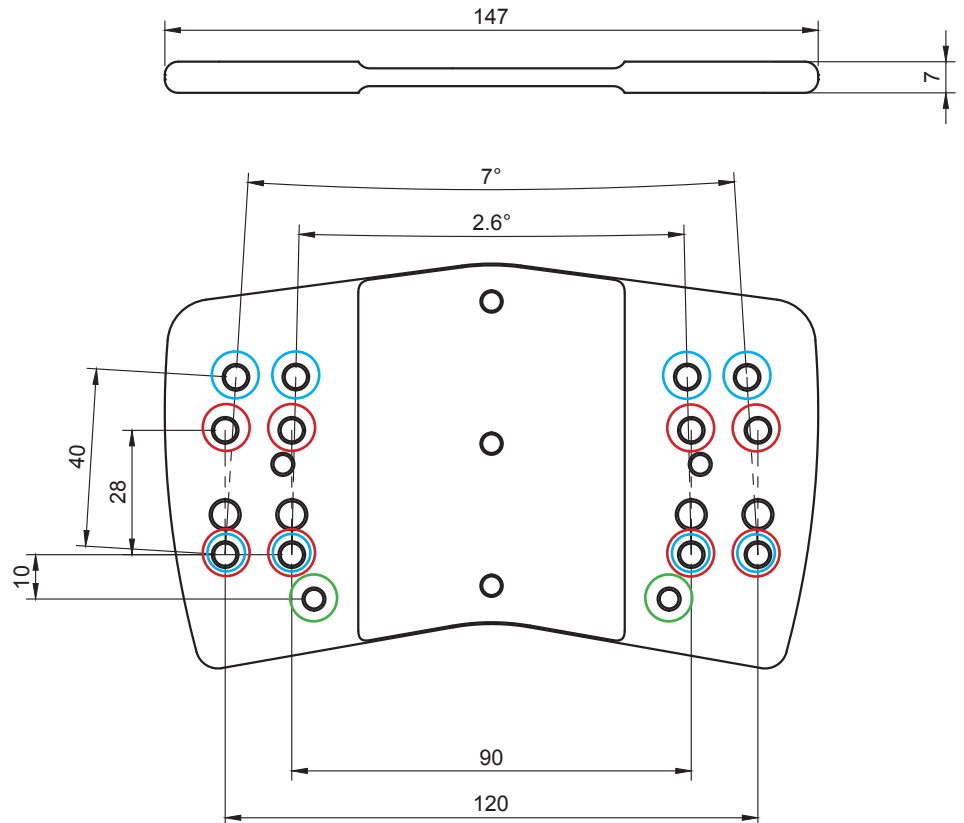




Cervelo 3T Adduro Basebar

PLATE IS NOT UCI LEGAL

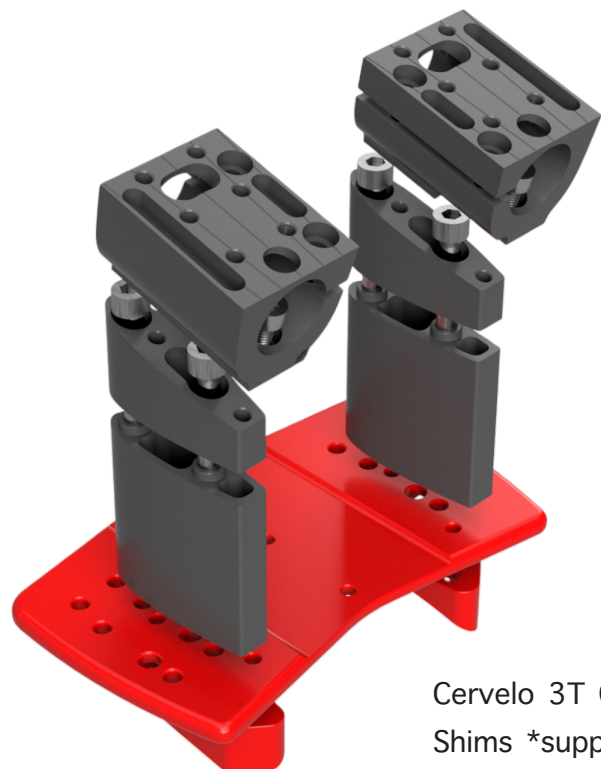
- For use on Cervelo 3T Aduro Base bar
- Plate attaches to Cervelo 3T Aduro basebar using supplied Shims and bolts.
- Gen1 angled shims and pole clamps offset pole by 15mm either side. Poles can be set to widths of 60, 90, 120 or 150mm. 1.3° or 3.5° of toe options each side. **Mount in the holes marked in blue.**
- Gen2 angled shims and pole clamps mount poles directly above shims to provide pole widths of 90 or 120 with up to 6° of toe in pole clamp. **Mount in the holes marked in red.**
- **Cervelo rear riser bolts**



Torque to Basebar Specifications

Supplied with:

- 2 x M5 28mm Torx Countersunk Screws - (front cervelo riser bolt)
- 2 x M5 35mm Torx Countersunk Screws - (front cervelo riser bolt)
- 1 x Cervelo 3T Aduro Plate
- 1 x Cervelo 3T Aduro Shim Pair (LH + RH)



Cervelo 3T Conversion Plate *supplied

Cervelo 3T Conversion Shims *supplied

DRAG2ZERO

